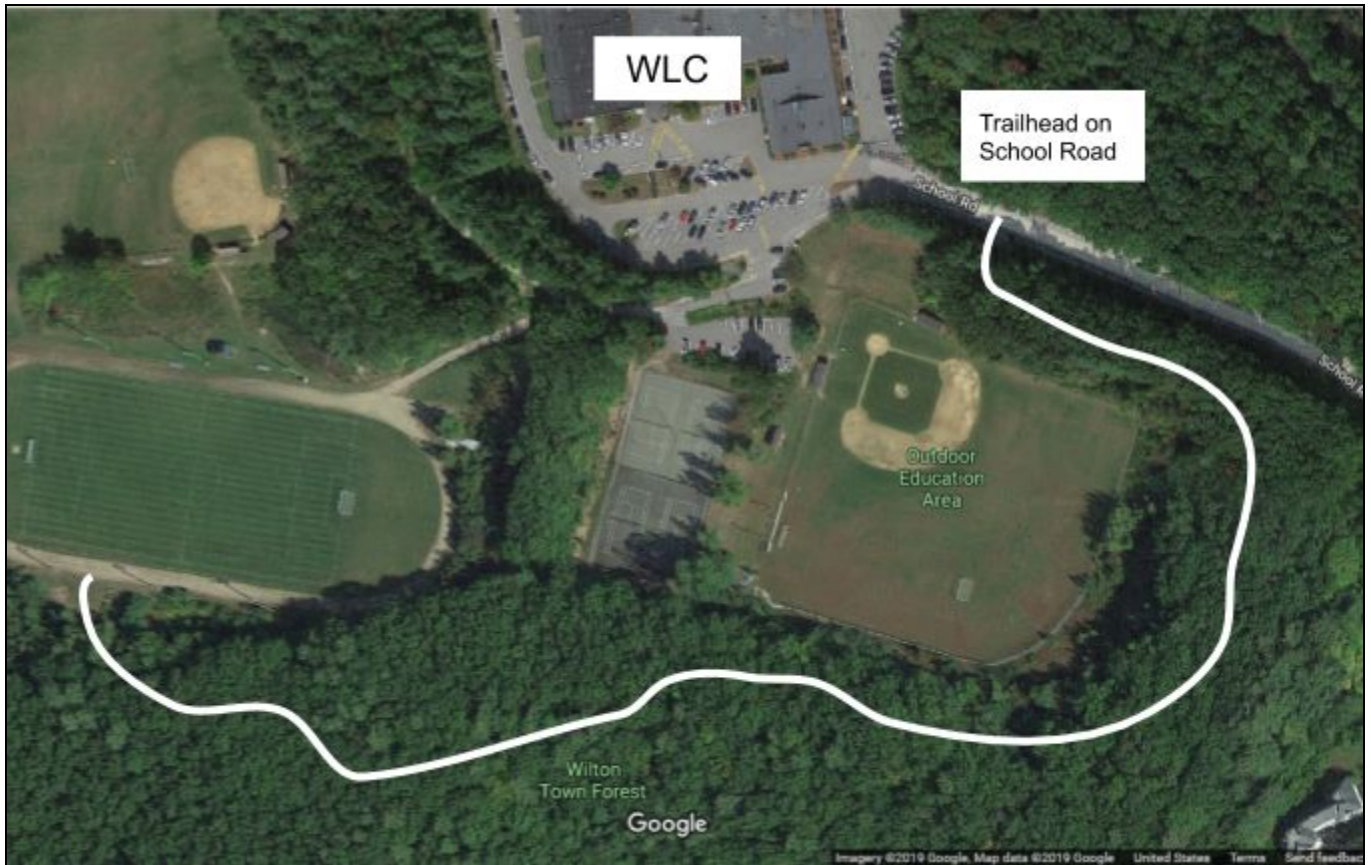


~~ The WLC POETRY TRAIL ~~



WLC Tech Ed students, with a generous grant from the Poetry Society of New Hampshire, have utilized scrap wood and technological know-how to create a nature themed Poetry Trail through the WLC woods.

A few hundred yards long, the trail begins just before the school parking lot on School Road and runs through second growth forest and shrubland on largely level, accessible terrain. As visitors walk, they encounter dozens of poems and poem fragments, printed onto small locally felled pine boards and suspended from the trailside trees. The poems feature themes of forest and nature, creating a unique mixed sensory experience.

Students used an anthology of New Hampshire and northern New England poets to choose verses that had meaning for them, or that mirrored their own experiences in the woods. The anthology, created for this project by PSNH board member Lee Ann Dalton, featured poets both famous (Maxine Kumin, Robert Frost) and less well known but locally honored (Charles Pratt, Patricia Fargnoli).

Using a linked series of computer graphics applications, students laid out and mirror printed their verses, and then used a polymer-medium transfer technique to permanently print them onto squared, sanded, and primed pine scrap from the Tech Ed shop. The process involved experimentation and necessitated a thorough knowledge of the machine tools used, as well as comfort with multi-step computer graphics and printing technologies. Each poem hangs from a tree the student chose while the class walked in the woods, and you are invited to come and walk the WLC Poetry Trail yourself.