

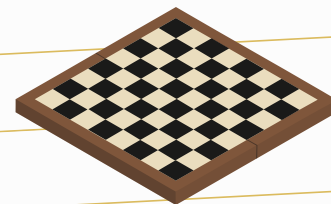
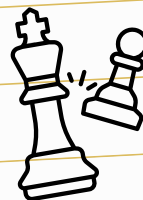
# FLORENCE RIDEOUT

## NEWSLETTER

MARCH 28TH, 2025

What is  
new at  
FRES?

Reminder:  
No School Friday!

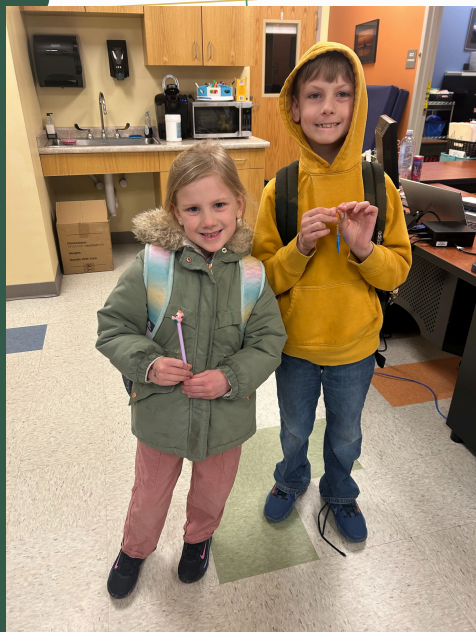


We had a great week at FRES! The 4th graders continue to water and observe the plants each and every day. 2nd grade is gearing up for the field trip next week to the Colonial Theater. And students are practicing their tumbling skills in PE class.

Girls On The Run started on Wednesday, and we are so excited to see returning students this year! Next week, we have Chess club beginning so do not forget to change dismissal plans on pickup patrol if your student is participating in either of these events.

Thursday, each recess practiced a reverse evacuation drill. Staff and students discussed and practiced the steps of re-entering the building in case of an emergency. Great job everyone!

We hope you have a great weekend and have a chance to spend some time with family and friends.

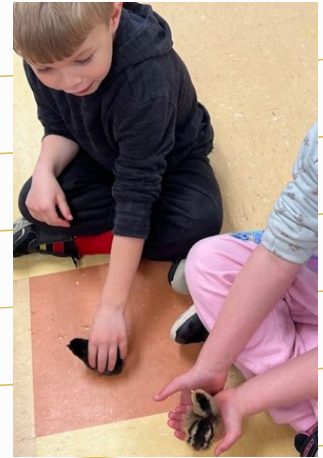


Elyse & Callan Radloff  
Knew the answer to the riddle  
this week!  
Mon-KEY!



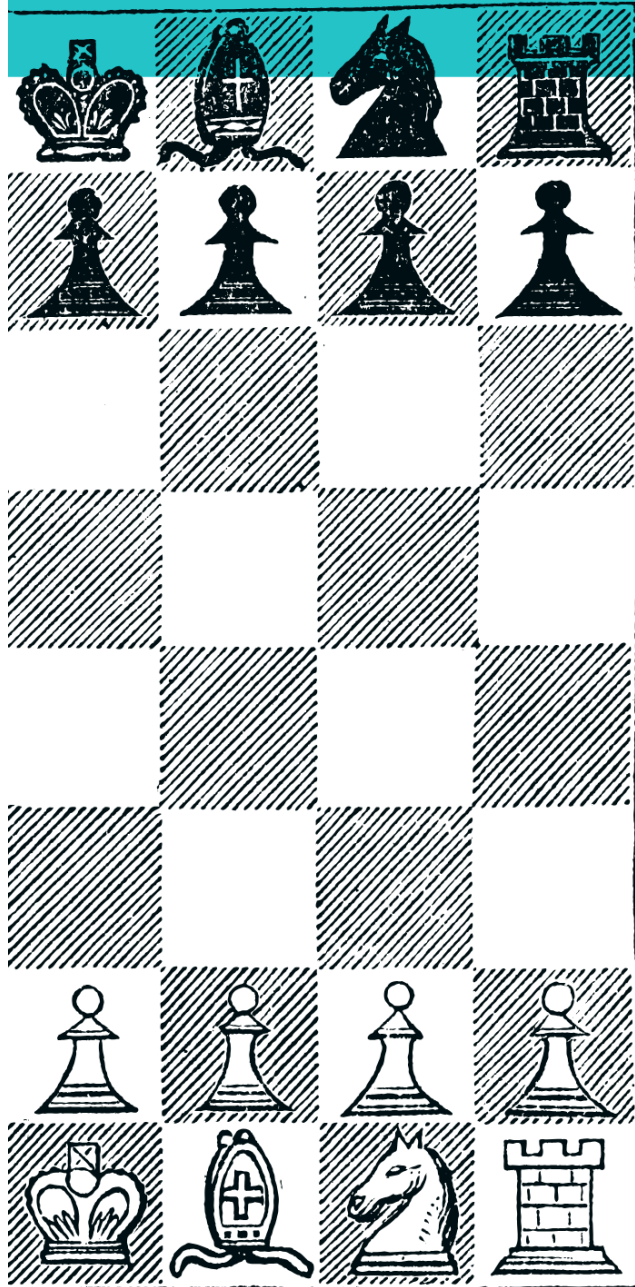
# LYNDEBOROUGH CENTRAL NEWSLETTER

What is  
new at  
LCS?



This week at LCS, we visited the J.A. Tarbell library. Students loved listening to the stories and taking out books. We can't wait for our April visit. Chicks hatched in Mrs. Albee's classroom! All the students were able to hold and pet the chicks. The kindergarten students are learning teen numbers! Students have been practicing reading, writing, and counting up to 20. On Friday, April 18th, we will be having a school-wide egg hunt. Please see the flyer that went home in your child's folder. Have a great weekend!!





3rd-5th Grade



# CHESS CLUB

With

Mrs. Radloff & Ms. Loisel

MONDAY'S 3/31-4/21

2:45PM-3:30PM

IN THE FRES LIBRARY

TRANSPORTATION WILL NOT BE  
PROVIDED

STUDENTS MUST BE PICKED UP AT FRES  
(AND UPDATE DISMISSAL IN PICKUP  
PATROL)

SPACE IS LIMITED SO SPOTS WILL BE  
FIRST COME FIRST SERVED

SIGN-UPS ARE DUE BY 3/27

MAKE YOUR MOVE! JOIN THE CHESS CLUB!

IF YOU HAVE ANY QUESTIONS PLEASE REACH OUT TO

MRS. RADLOFF [J.RADLOFF@SAU63.ORG](mailto:J.RADLOFF@SAU63.ORG) OR MS. LOISELLE [S.LOISELLE@SAU63.ORG](mailto:S.LOISELLE@SAU63.ORG)

## Riddle of the Week:

**What appears once in a minute,  
twice in a moment, but not once in a  
thousand years?**

The first 5 students who know the answer and  
who come to the front office will receive a  
small prize.

*Last weeks answer to the  
riddle is "Mon-key"!*

**HELP  
!!!**

SAU 63 is currently looking for  
substitute teachers for all areas  
and all grades. If you would like  
to be a part of our team, please  
fill out the applications today!



## Upcoming Events

- 3/29 Penny Sale at WLC
- 3/31 Chess Club Starts
- 4/4 Report Cards sent home
- 4/7- 4/11 Scholastic Book Fair
- 4/28-5/2 Spring Break No School



WLC SPRING INTO SUMMER FEST!

# Calling Artisan Vendors...



...and Local musicians!

Do you create art, self care products,  
or grow plants and food? Join US!

## Sat. May 10th

### 8 AM - 2 PM

# SAVE THE DATE

Support community  
growth in local culture,  
art, and homegrown  
food!

If it rains we will be in  
the town hall instead!

**Main Street Park  
Wilton, NH**

**CONTACT:** Emily Hall  
[e.hall@sau63.org](mailto:e.hall@sau63.org)

# **SPRING SCHOLASTIC BOOK FAIR**

## **APRIL 7TH-11TH**

📍  
**SET UP YOUR STUDENTS E-WALLET  
TODAY!**







# Plant Sale

**JOIN US MAY 10TH**

**8AM-2PM**

EMAIL US AT  
FRESLCSPTO@GMAIL.COM  
OR  
BRIELAVALLEE@GMAIL.COM  
IF YOU WOULD LIKE TO DONATE  
ANY  
PLANTS OR VOLUNTEER TO HELP

